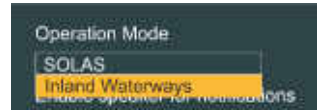
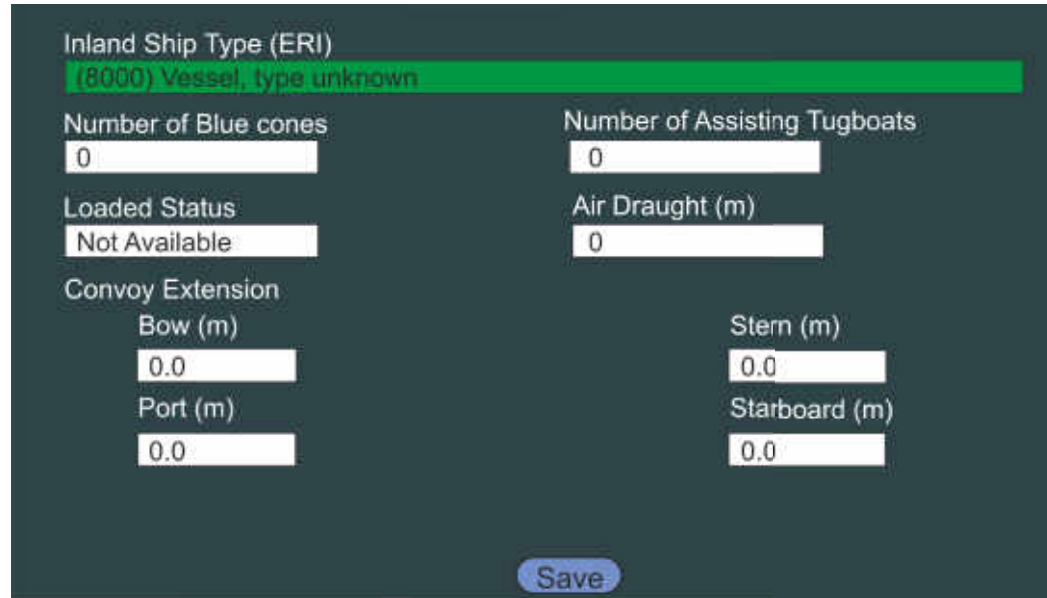


INLAND WATERWAYS

Settings
 System
 General



Settings
 AIS
 Inland Voyage



INDICATOR LED

Off	Power Off
Green	Normal Operation
Amber	Active Caution
Red	Active Alert



Quick Reference

	Menu
	Enter
	Jog Stick/Control Knob
	Display Brightness
	Voyage Data Input
	Page

ATA100 Class A AIS Transceiver

English

	Position Fix: Internal External None
	Chart orientation: North Up Heading Up Course Up
	Navigation status: At Anchor Under Way Moored
	CPA/TCPA Alarm: Enabled Active Disabled
	Unread Messages
	Active Caution
	Warnings: Unacknowledged Acknowledged Rectified/ Unacknowledged
	Transmitter: Low Power Silent Mode
	Blue Flag Active (Inland Waterways)

PILOT PLUG



Standard Pilot Plug behind rubber shield.

Micro USB socket for recording data or firmware updates.

Ocean Signal Ltd.
Unit 4, Ocivan Way
Margate
CT9 4NN
United Kingdom

info@oceansignal.com
www.oceansignal.com

912S-03334 Rev 1.05

www.oceansignal.com

Display Brightness



Page Cycle

- Map-



- Target List -

MMSI Number	Name	CPA	TCPA	ETA	Age
XXXXXXXXXX	SEA LION	1.2	1.90	0.1	30s
XXXXXXXXXX	MATTHEW	3.0	078'	3	32s
XXXXXXXXXX	FEAR	4.3	075'	4	0s
XXXXXXXXXX	TOGETHER	6.0	175'	4	1M
XXXXXXXXXX	GREEN GRASS	6.1	103'	3	2M
XXXXXXXXXX	HEY JOE	8.2	185'	6	1s
XXXXXXXXXX	BAD BOY	7.2	045'	7	5s
XXXXXXXXXX	SHADOW	8.2	245'	8	13s
XXXXXXXXXX	HAPPY JACK	9.1	035'	9	4s
XXXXXXXXXX	MORNINGTOWN	9.2	199'	9	36s
XXXXXXXXXX	(UNKNOWN)	9.3	095'	9	1M
XXXXXXXXXX	FREE	11.8	135'	12	24s
XXXXXXXXXX	THE PARK	12.8	034'	13	8s
XXXXXXXXXX	SUGAR TOWN	13.2	029'	13	27s

Active Targets Sorted By: Distance

- Target Radar -



Messages >

- Safety Messages >
 - Addr. Inbox
 - Bcast. Inbox
 - Addr. Outbox
 - Bcast. Outbox
- System Messages >
 - Alerts
 - Status Messages
- Text Messages >
 - Addr. Inbox
 - Bcast. Inbox
 - Addr. Outbox
 - Bcast. Outbox

Status >

- System >
 - Status
 - Info
 - Log
- Ownship Static
- Ownship Dynamic
- GNSS Status >
 - Internal GNSS
 - External GNSS

Settings >

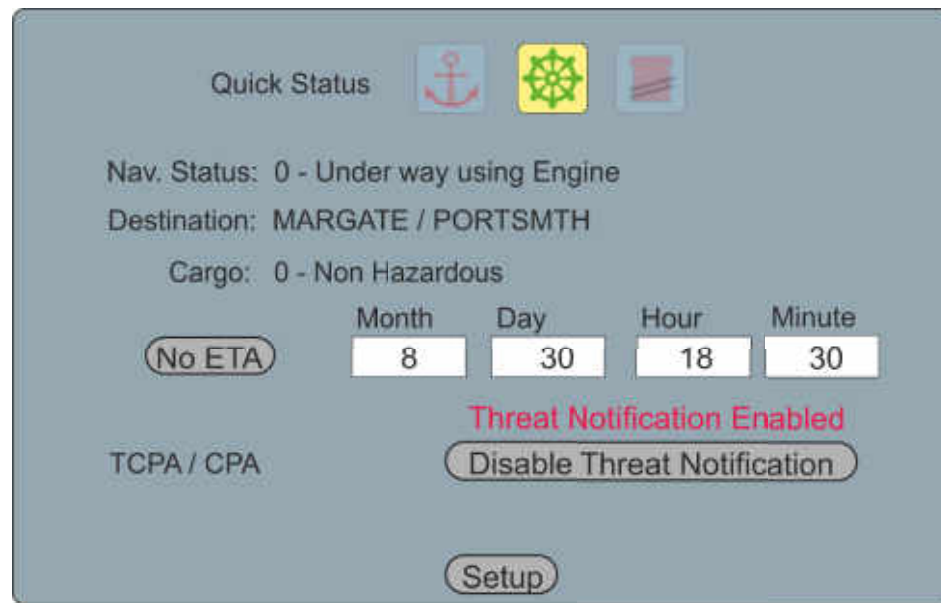
- AIS >
 - Voyage
 - Ownship
 - Friends
 - LR Messages
 - Regions
- System >
 - General
 - Audio Settings
 - WiFi
 - Input / Output
 - Comms Test
 - Advanced

Map Options >

- Orientation >
 - North Up
 - Course Up
 - Heading Up
- Range Rings >
 - Enabled
 - Disabled
- Grid >
 - Enabled
 - Disabled
- Ownship Trail >
 - Enabled
 - Disabled

Structure shown for Map View, minor variations in Target List and Target Radar Pages

Quick Status



Select At Anchor, Underway (with Default Nav. Status) or Moored and press



Enter ETA or select "No ETA" when starting a voyage
Disable / Enable CPA/TCPA notification - Recommend Disable when entering port
Press Setup to make further changes to voyage Data:

