

018: rescueME MOB1 Battery Replacement

Introduction

This bulletin describes the method of replacing a battery in the rescueME MOB1. The battery replacement kit contains all the parts need for replacement.

Pack Contents

LB9M battery pack (1)	1
Case Seal (2)	1
Battery Compartment (3)	1
Body Screws (4)	2

Dismantling

Remove the Battery Compartment by undoing the two screws (4). Carefully remove the battery compartment (3) from the main housing (5) leaving the battery and metal foil attached to the housing. Be careful not to damage the tape.

Important: Do not attempt to remove the PCB assembly from the main housing.

Peel off the label that attached the metal foil to the battery assembly from the battery. Unplug the battery from the PCB connector.

The old battery should be discarded in accordance with waste disposal regulations in force in your country.



Reassembly

Plug in the new battery, observing the polarity of the connector (red cable to the edge of the PCB), and stick the metal foil back on the battery. Make sure the tape is tight, so that when it is assembled it lays neatly over the battery.

Fit the new case seal (2) into the new battery compartment, making sure the seal bead is on the compartment side. Slide the compartment over the battery and hold tight on to the main case. Insert the two screws and tighten them to 0.5cN.m

The replacement battery compartment will show the new battery expiry date.

Battery Counter Reset

Download the MOB1 configuration software from our web site. To run this in service mode please follow the following instructions.

Either create a desktop shortcut with the target set as

For 32 bit operating systems:

"C:\Program Files\Ocean Signal\MOBConfig\MOBConfig.exe" ocean930

For 64bit operating systems:

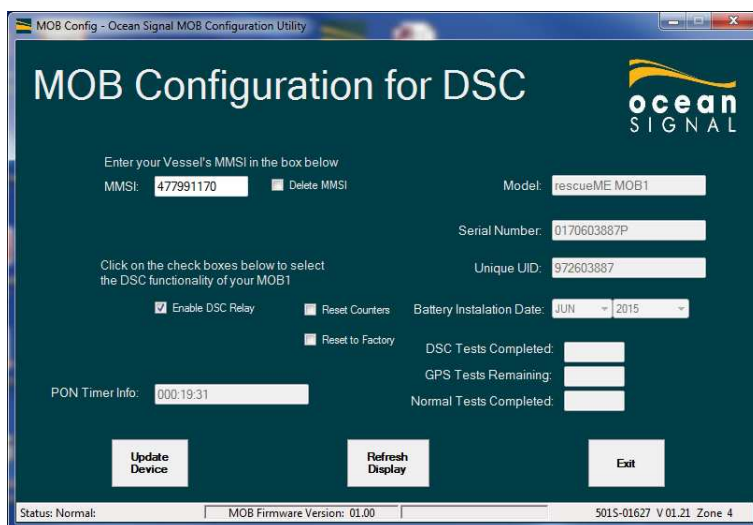
"C:\Program Files (x86)\Ocean Signal\MOBConfig\MOBConfig.exe" ocean930

Or type cmd in the search box of the start menu. A command line interface will open. Copy the complete line above and right click on the command line interface and select paste. Press return and the programme will open with a selection screen.



Select <CONTINUE> to run the software using the PLB programming adaptor (wand).

To put the MOB in the correct programming mode, select the programming mode as standard, but just after releasing the button when the LED flashes green, press the test key again. The LED will flash red. You are now in wand mode. With the wand over the MOB LED, press continue. Use the black rubber configuration adaptor between the MOB1 and the wand. The contents of the MOB1 should now load.



There is a tick box saying reset counters. Select this and press update. After a few seconds, there will be a confirmation and the data on the screen should update.

Retest the MOB1 using the test switch as described in the user manual. If successful, the LED will flash green.

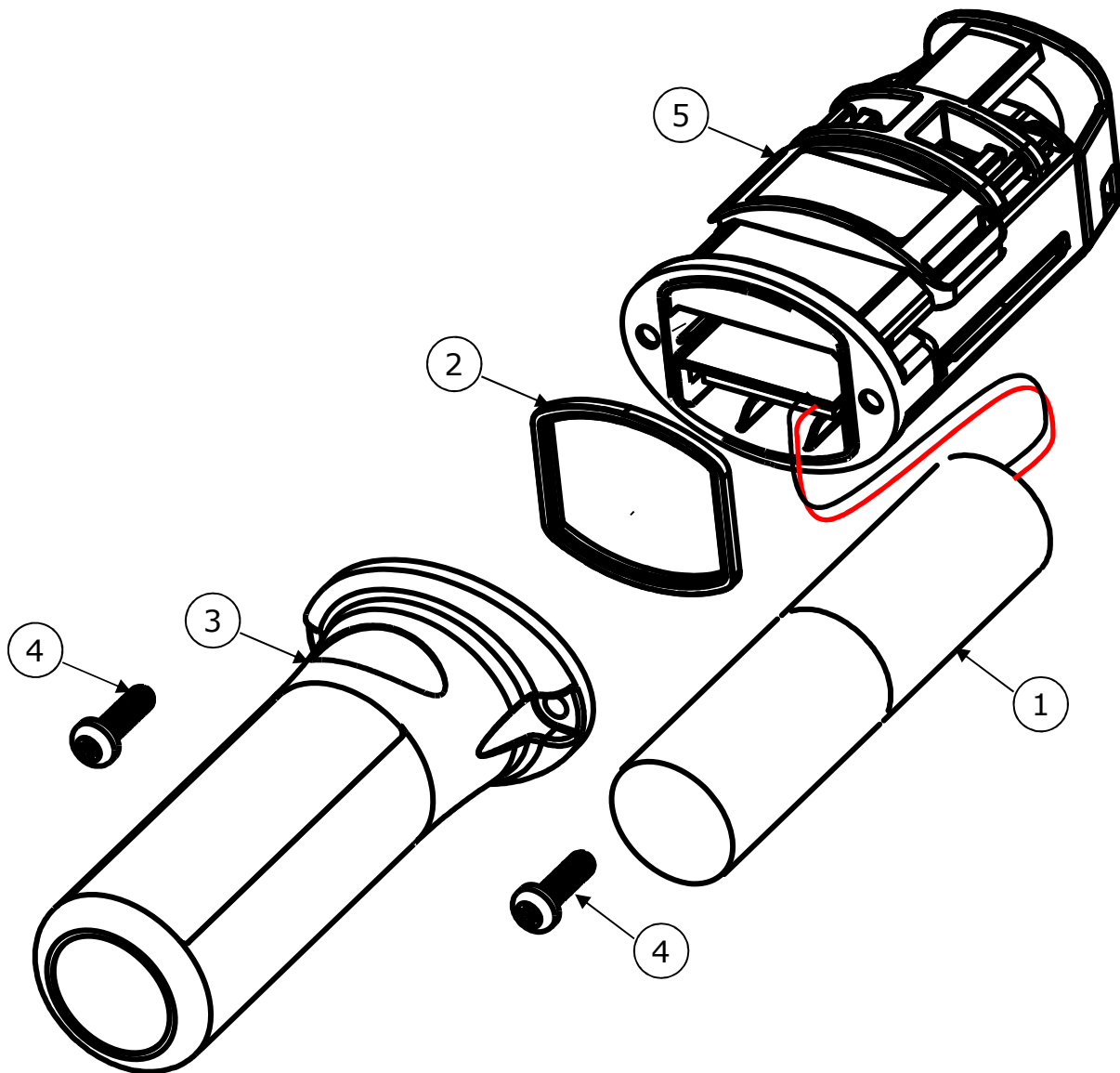


Figure 1: General assembly